

23.06. - 06.07.2025

INFOPACK

International inclusive workcamp

Riesa, Germany

[Apply here](#)



Content

1. About the project
2. Hosting organization
3. Accommodation
4. Travel to Riesa
5. Program modalities
6. Conditions & Reimbursement
7. Preparatory meeting
8. What to bring
9. Next steps & contact



**EUROPEAN
SOLIDARITY
CORPS**

This project is funded by the European Solidarity Corps (ESC). It is a team volunteering activity, not individual volunteering.



1. About the project

The old manor is to be restored. During our 2-week work camp, a group of 15 participants will devote themselves to the estate and its surroundings. We want to build a herb spiral from natural stones, build a path from natural stone paving, construct raised beds from tree trunks, cook together, work on the monument and, if desired, carve wooden sculptures.

We will also participate in the Riesa city festival by planting a park to create added value in the region surrounding the estate.

In the first few days, a few pupils from a school for special needs will be with us to work on the estate.

We will learn about gardening, manual activities, we are planning trips to Meißen, a beautiful city on the Elbe, and Leipzig, an old trade fair city and a centerpiece of Saxony.

Together we will work on the land, help in the sheep farm if needed, enjoy the summer, go to the swimming lake, make wooden toys to use outside and work on the beautiful old building and beautify the grounds. For two weeks, we are allowed to live in and revitalize it.



Meißen



Leipzig

2. Hosting organization

VILLA is the hosting organization of this ESC project. We are a non-profit sociocultural centre in the heart of Leipzig. With over 100 events each week, it offers a wide range of activities and courses for every age group in several genres (media lab, music lab, circus, theatre, dance lab, bicycle-repair and more). The target group varies from early music training with toddlers to young people with and without disabilities to back schooling for senior citizens. The centre has a youth club, a youth café and a flat share for volunteers engaged in ESC projects. There is also a department for international youth work.



Sprungbrett e.V. is a non-profit organization established in 2004 that operates in the field of youth services in the Meißen district. With programs ranging from open youth work and school social services to specialized initiatives like offender support and employment promotion, the association actively contributes to the positive development of young people and the community. On the historic **Gut Göhlis** – a former communal estate with origins dating back to the 13th century – the organization is implementing an extensive renovation and usage concept. The aim is to transform the estate into an inclusive, intergenerational meeting place that, in addition to social programs, offers cultural events, recreational opportunities, a traditional sheep farm, and a camping site.

Sprungbrett
e.V.

3. Accommodation

The overnight stay will be in tents, which you will need to bring your own. If you do not have tents, please contact us, we will find a solution. It is also important to bring your own sleeping mat, sleeping bag and everything else you need for comfortable camping outside. We expect the weather to be nice and warm at the end of June/beginning of July. However, the last few years have been very changeable - so make sure you pack warm clothes and rain gear. In terms of food, we will be self-catering in cooking teams during the days.

Address: Volksgut 1, 01589 Riesa



We will certainly spend an evening or two around the campfire. So bring warm clothes and, if anyone has instruments and songbooks, bring them too. Music by the fire is more than welcome.



4. Travel to Riesa

Arrival day: June 23rd before dinner

Departure day: July 6th

How to get to Riesa?

#Via Bus & Train

Book a bus or train to “Leipzig Hauptbahnhof” (Leipzig Central Station) and from there a train to “Riesa”. (from LCS it will take 30-45min to Riesa). Please let us know about your arrival time and we will pick you up by car to bring you to Gut Göhlis.

#Via Plane

The nearest airports are:

Leipzig (LEJ)

Dresden (DRS)

Erfurt (ERF)

Berlin (BER).

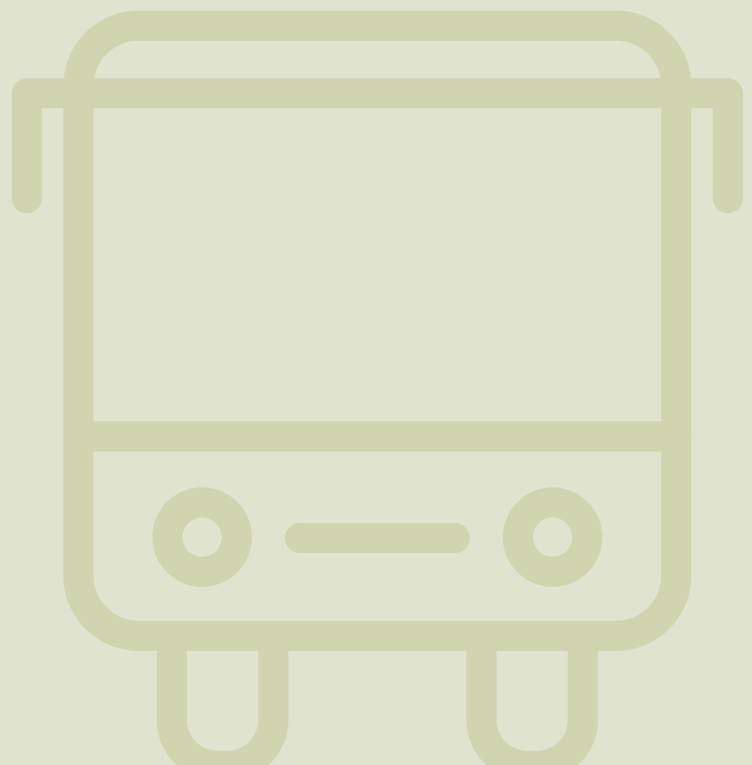
From there you can take

the train or the Flixbus

to Leipzig main station.

Follow the instructions for bus and train from here.

We would like to point out that we prefer to travel by bus and train for reasons of sustainability.



5. Program modalities

The project is funded by the European Solidarity Corps (ESC) and it's a so-called "Volunteering Team". For more information, please click here: https://europa.eu/youth/solidarity_en

Therefore, every participant of our International inclusive workcamp needs to be registered on the European Solidarity Corps platform. To participate, you must be between 18-30 years old.

What is included when participating?

- full board
- campsite for the tents
- pocket money (98€) (participation is only possible for the whole 14 days)
- Youthpass certificate
- health and accident insurance
- reimbursement of travel costs due to the program rules and Erasmus distant calculator
- a lot of fun and a good summer time with international people

6. Conditions & Reimbursement

Reimbursement of travel costs

When buying tickets, please keep in mind:

- Please buy your tickets as soon as possible
- Use the most direct and cost-efficient way
- After booking you must inform the project coordinator (caroline.lorenz@villa-leipzig.de) about your travel details (arrival/departure dates, times, route).
- There is a fixed maximum amount reimbursable for your trip costs. The sum, set by the European distance calculator, covers the travel costs including return trip from and to your country of residence. Travel costs exceeding the maximum reimbursable amount will not be covered. Regarding the distance, the maximum budget is:



6. Conditions & Reimbursement

10-99km: 28€ per participant | green travel: 56€

100-499km: 211€ per participant | green travel: 285€

500-1999km: 309€ per participant | green travel: 417€

- If you have special travel requests (e.g. not direct route), please confirm these with the project coordinator before purchasing the ticket. Failure to do so may result in some tickets not being reimbursable.
- **Please mind** that the money you won't use of your travel budget can be used by us to pay additional material, food and our workshop leaders. Therefore, we kindly ask you to book your ticket as early as possible.

#1 Means of transport

Participants can travel in economy or second class by: bus, train, plane, public transport (no taxis!). We very much appreciate you using green transportation for traveling that produces less emissions, if possible.

#2 Keep your tickets and receipts

Travel costs can only be reimbursed with a valid travel ticket or invoice with your full name. In case you use online tickets with an app, please extract your ticket from the app or make screenshots.

#3 Reimbursement

Reimbursements will be made by bank transfer directly to the participant at the end of the project or - if a sending organisation is involved - by bank transfer to the organisation.

Please check that your travel documents are valid for a sufficient period of time. If your travel documents are invalid, we will not refund any costs incurred afterwards.



7. Preparatory meeting

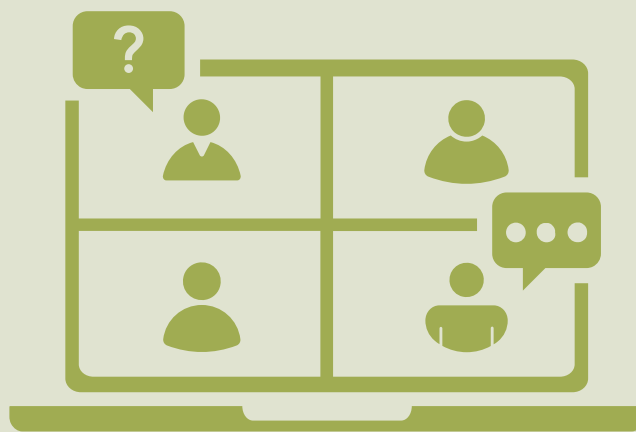
We're going to have an online preparatory meeting of all participants and the organization team on **May 13th, 5:30pm – 8pm max.**

The participation is mandatory for your participation in the project. In case you can not join, please contact the project coordinator. The link to join the virtual meeting via Google Meet will be sent to you a couple of days before the meeting for the ones that will participate.

What is the preparatory meeting for?

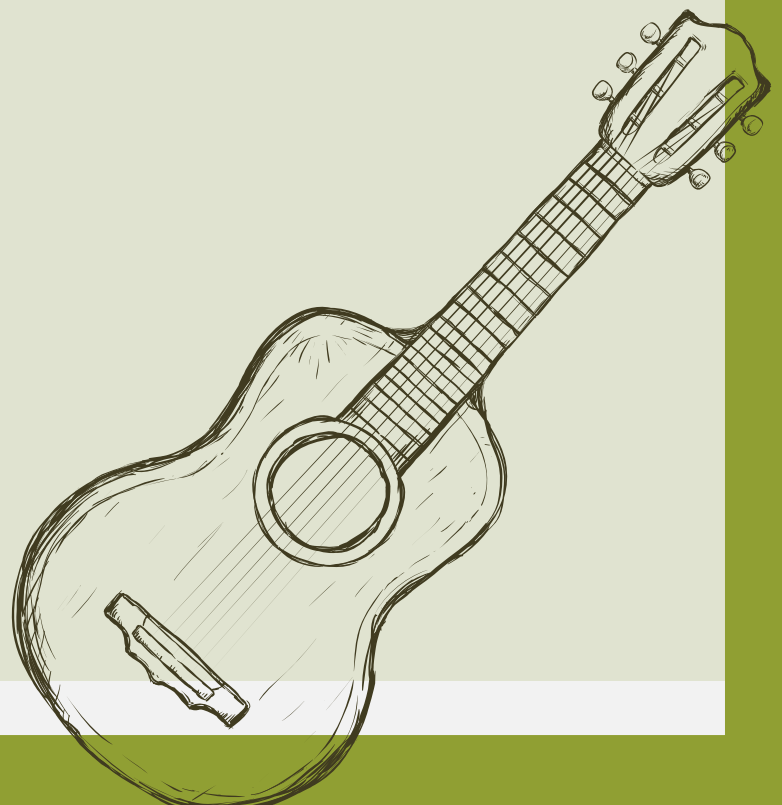
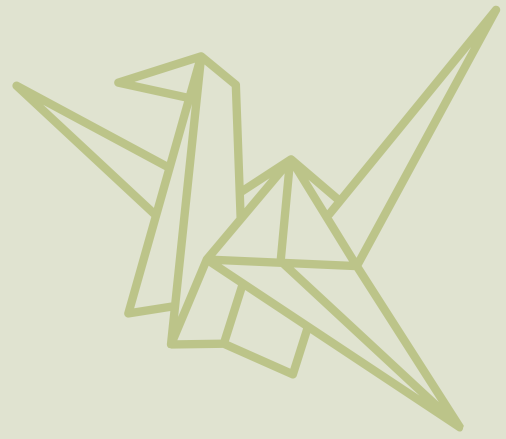
We want to meet up online before to get to know each other, our ideas for the work camp and also additional workshops you may want to hold. It will be very useful to get a first overview who - from the international team - will take part.

In addition to that, we want to explain you more about your stay in Riesa and answer your questions.



8. What to bring

- tent
- sleeping bag + pillow
- mattress
- working clothes that can get dirty
- proper shoes (no flip flops during working time)
- European Health Card (you have to bring a physical card. If you have questions, please let me know)
- hat to protect from the sun, sun cream
- mosquito or insect repellent
- towels
- swimming clothes
- warm clothes (for rainy days and the evenings)
- rain gear
- personal medicine, toiletries/sanitary bag
- cooking recipes, food or drinks from your country you'd like to share with others
- if you are a guitar player, dancer, flute player, cobra charmer, origami master or someone else, then don't forget to bring your board games, utensils and equipment to share your skills and with the others



9. Next steps & contact

Apply here until 27th of April.

We will come back with a final answer until the **7th of May**. As mentioned, please keep the **13.05.2025 from 5:30-8pm** free for an online preparation meeting.

If you have been selected:

1. **Register on the ESC platform** if not yet done.
2. **Sign the activity agreement** and sent it back via email (headline "International inclusive workcamp - activity agreement") to the project coordinator within the next 7 days.
3. **Book your tickets** according to the reimbursement rules mentioned above. Do that as soon as possible after you sent back the signed activity agreement.
4. **Send an email to the project coordinator** (headline "International inclusive workcamp - Travel") with information regarding your travel dates, times and route. Send all your booking confirmations or screenshots in attachment.

Contact

Caroline Lorenz (project coordinator)

caroline.lorenz@villa-leipzig.de | +49155 6065 1163